

# Assembly instructions IV-11 Thermometer Glass Dome

## Wireless Temperature Transmitter.

To protect housing and electronics from the weather and sunshine, the Transmitter should be inside. Window ledge.  
The waterproof NTC sensor must be soldered via cable.

Insert the cable on the left site and solder to NTC points.  
Fix the wires, glue, in the strain relief.



Close the housing, hook in at the top, antenna and press together.  
Screw on the screw.

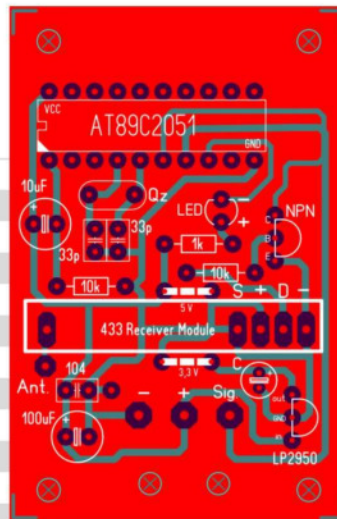
## Wireless Temperature Receiver.

Solder components, see parts list.

The antenna cable „ ANT „ must be 17 cm.

### Parts Wireless Temperature

Transmitter	= 1 x incl. case
NTC Sensor	= 1 x 10K 3470
PCB	= 1 x
Resistor	= 2 x 10k brown,black,orange
Resistor	= 1 x 1k brown,black,red
Capacitor	= 1 x 100uF
Capacitor	= 1 x 10uF
Capacitor	= 1 x 100nF 104
Capacitor	= 2 x 33pF
Quarz	= 1 x 11,0592
Led	= 1 x
Transistor	= 1 x NPN
IC Socket	= 1 x 20 Pin
IC	= 1 x AT89LP4052
433 Receiver	= 1 x
Solder pins	= 3 x
Cable	= 1 x 0,5m white, red, yellow
Cable Antenna	= 1 x 15cm
Case	= 1 x
Screws	= 4 x
Cable Tire	= 1 x



The new board is designed for 433 modules 5 volts or 3 volts voltage. For 5 volt modules, the bridge must be "5 V" above the module must be soldered.

For 3 volt modules, the bridge must be "3.3 V" below the module soldered.

The components C = 10uF/22uF and LP2950 must be soldered in.

### 3.3 Volt Receiver Module

Capacitor C	= 1 x 10uF / 22uF
Voltage Regulator 3.3	= 1 x LP2950